

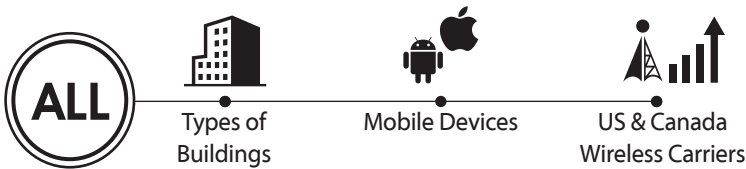


Building Cellular Signal Booster

Stop dropped calls. Ensure your connection.

Building Booster B-50K

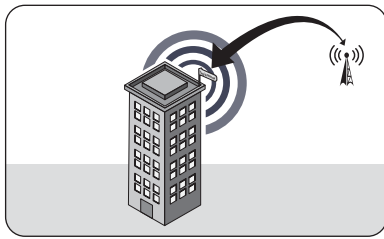
American Booster's B-50K Booster provides an advanced solution for boosting your signal, reducing drop calls and increasing your data speeds.



3-Year Warranty

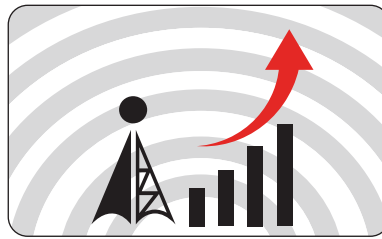
Signal Booster B-50K works with buildings up to 50,000 sq. ft. in size.

How It Works



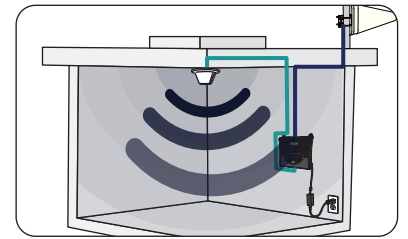
Receives Signal

The outside antenna receives voice and data signals from a nearby cell tower.



Boosts Signal

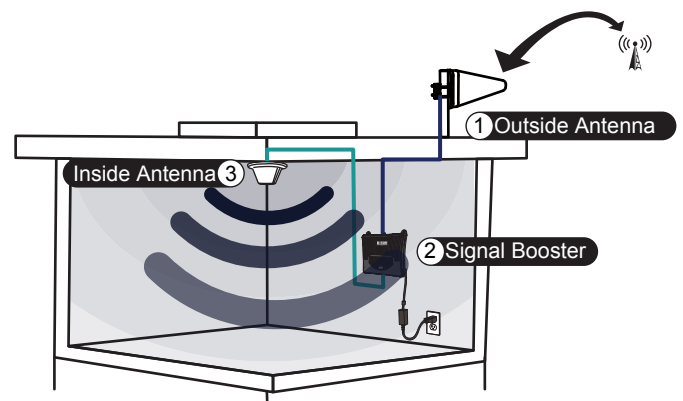
The booster amplifies the outside signals and sends them to the inside antenna.



Distributes Signal

The inside antenna distributes the boosted signals inside your building and provides better cellular coverage and faster data speeds.

Anytime, Anywhere Boost Your Cell Bars. Stay Connected.



American Booster's Benefits



Improves Voice Signals



Reduces Dropped Calls



Boosts Data Speeds



No Additional Monthly Fee



Environmentally Friendly



Supports Multiple Users



Extends Phone-Battery Life



3G, 4G, LTE Coverage

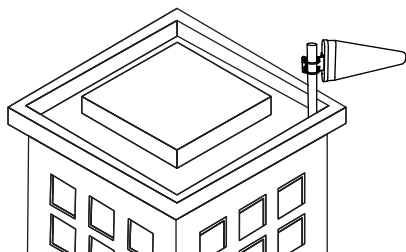


Easy Installation

Building Cellular Signal Booster

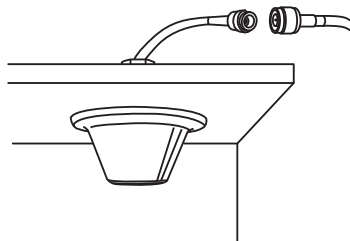
Stronger signal. Faster data speeds.

How To Install



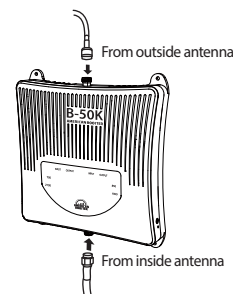
Mount the Outside Antenna

Mount the outside antenna to a pole of the building. The higher the antenna the better it receives signals from a nearby cell tower.



Place the Inside Antenna

Place the inside antenna close to your phone or tablet for an optimal performance.



Install Signal Booster

Mount booster to a desired location close to a power source.

Specifications

Parameter	Downlink	Uplink	Remark
700MHz LTE	728~756MHz	698~716MHz	Band 12 & 13
		776~787MHz	Band 13
850MHz Cellular	869~894MHz	824~849MHz	Band 5
1900MHz PCS	1930~1995MHz	1850~1915MHz	Band 25
2100MHz AWS	2110~2155MHz	1700~1755MHz	Band 4
Composite Power	15dBm	22dBm	
Maximum Gain	65dB (700 & 850) , 72dB (1900 & 2100)		
Noise Figure	6dB nominal		
EVM / Spurious Emission	3GPP & FCC Rule Compliant		
ANT Isolation Setting	Gain + 15dB @ Initialization or Recheck		
Impedance	50 Ohm		
RF Connector	N-Type Female		
Power Connector	DC-005 2ø		
Power	7.5VDC x 5.4A		
Size, inch	10.82" x 11.61" x 2.21"		W x H x D
Weight, lbs	8.16		
Operation Temperature	14°F ~ 122°F (-10°C ~ +50°C)		
Humidity	0 ~ 80%		
Material / Coating	AL / Flame Proof		

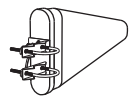
In The Box



Signal Booster B-50K



Inside Antenna Kit



Outside Antenna Kit



AC Power Cord



AC/DC Adaptor



Lightning Protector



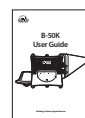
Coaxial Cable 100 ft.



Coaxial Cable 75 ft.



Coaxial Cable 2 ft.



User Guide